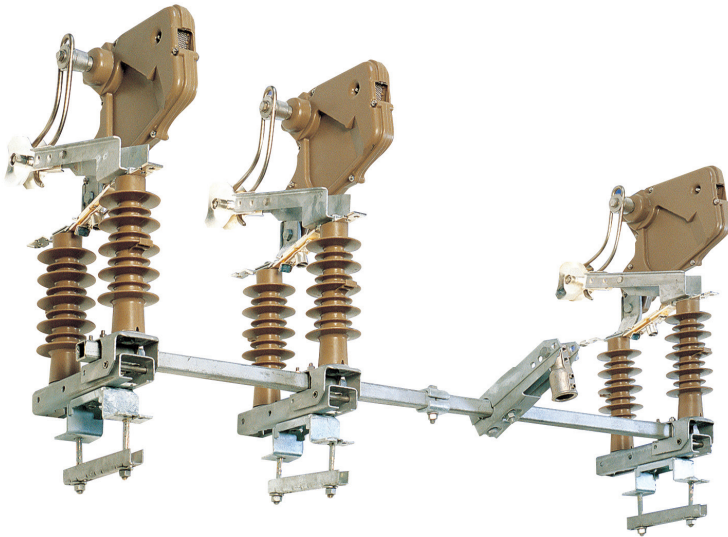


NPS

Modular outdoor switch disconnecter



NPS is air insulated outdoor switch disconnecter, dedicated for sectionalizing overhead medium voltage distribution networks.

NPS

- up to 36 kV nominal voltage
- Current breaking capacity from 16 – 630A
- Manual or remote motor controlled
- Ability to install additional pole equipment for different distribution network needs

Main Features

Reliable and flexible design:

- Mechanically stable structure to suit different climatic conditions
- Flexible mounting and installation options
- Wide range of breaking current parameters
- Manual or motor operating mechanisms
- Wide range of control cabinets to allow installation of communication equipment
- Easy upgradable
- Designed to be fitted with a wide range of modular accessories:
 - Earthing switches from both sides of main switch
 - Possible separate earthing switch solutions
 - Current transformers and surge arresters on same supporting structure

Quality:

- Steel components hot dip galvanized or stainless steel
- Silver coated copper current path
- Various insulation materials: porcelain, epoxy and silicon
- High number of operation

Safety:

- Visible open break
- Air insulation
- Padlocking in open or close position
- IEC type tested

Logistic and installation:

- Compact packaging reduces transportation and storage costs
- Modular NPS design minimizes on site assembly and installation time
- Adjustable phase distance

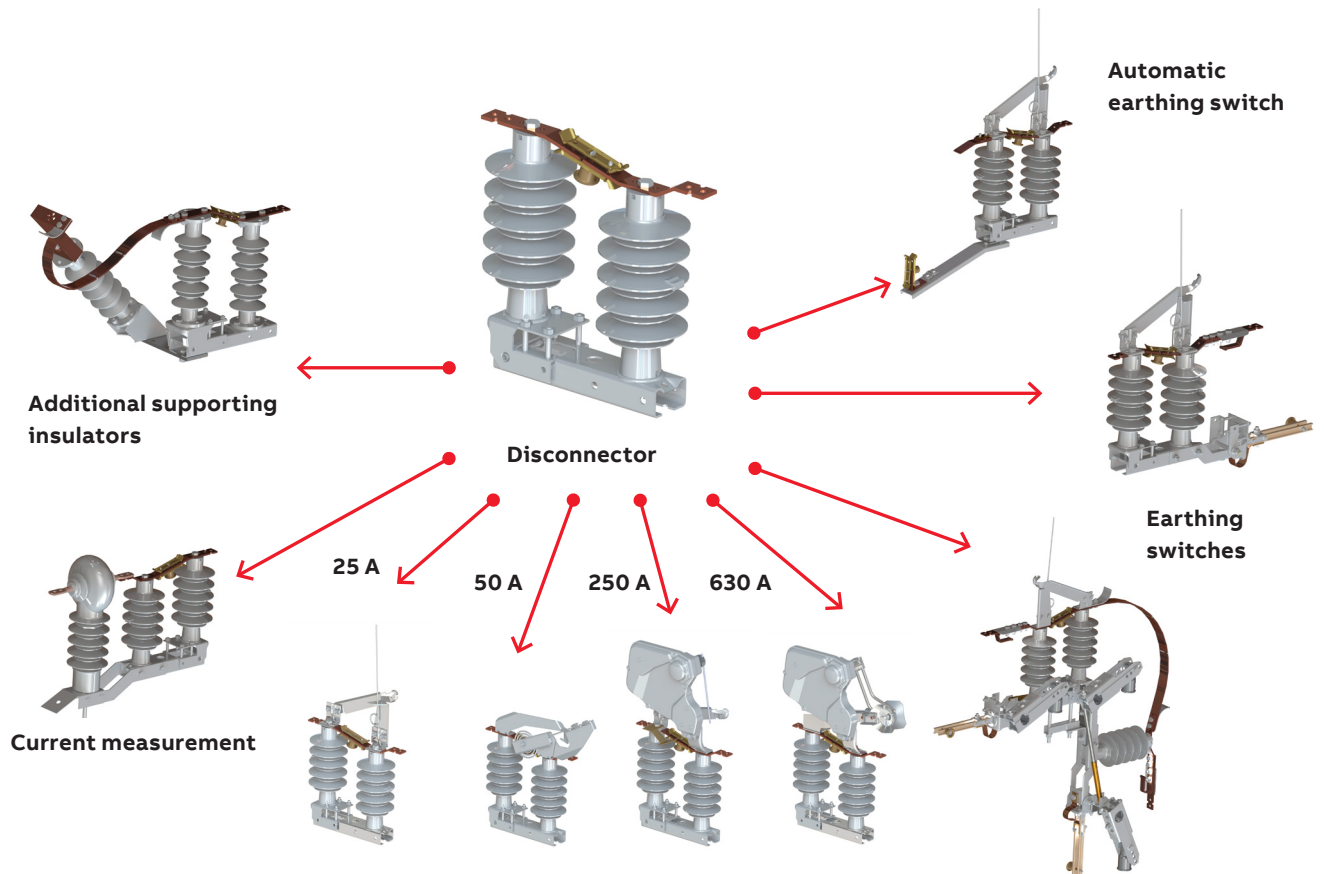
Environment:

- No oil or SF6 gas used in breaking chambers
- Recyclable materials

Main parameters

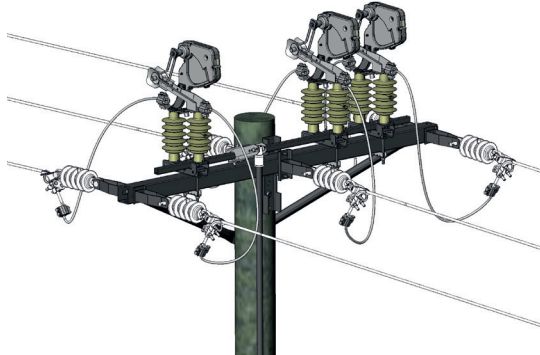
| Type | Disconnecter | Switch disconnecter | Switch disconnecter | Switch disconnecter | Switch disconnecter | Disconnecter | Switch disconnecter |
|---|---|---|---------------------------|---------------------------|---|-------------------------------------|-------------------------------------|
| Rated voltage | 24 kV | 24 kV | 24 kV | 24 kV | 25,8 kV | 36 kV | 36 kV |
| Rated current | 630 A | 630 A | 630 A | 630 A | 630 A | 630 A | 630 A |
| Insulators type | Epoxy (Porcelain) [Silicon] | Epoxy (Porcelain) [Silicon] | Epoxy [Silicon] | Epoxy (Porcelain) | Epoxy (Porcelain) [Silicon] | Porcelain (Silicon J2) [Silicon J3] | Porcelain (Silicon J2) [Silicon J3] |
| BIL | 125 kV (150 kV) [150 kV] | 125 kV (150 kV) [150 kV] | 125 kV [150 kV] | 125 kV (150 kV) | 125 kV (150 kV) [150 kV] | 200 kV (200 kV) [200 kV] | 200 kV (200 kV) [200 kV] |
| Creepage distance | 755 mm (620 mm) [760 mm] | 755 mm (620 mm) [760 mm] | 755 mm [760 mm] | 755 mm (620 mm) | 755 mm (620 mm) [760 mm] | 900 mm (1205 mm) [1365 mm] | 900 mm (1205 mm) [1365 mm] |
| Rated short circuit withstand current | 16 kA / 1 s (20 kA / 1 s) [25 kA / 1 s] | 16 kA / 1 s (20 kA / 1 s) [25 kA / 1 s] | 16 kA / 1 s [25 kA / 1 s] | 16 kA / 1 s (20 kA / 1 s) | 16 kA / 1 s (20 kA / 1 s) [25 kA / 1 s] | 16 kA (16 kA) [16 kA] | 16 kA (16 kA) [16 kA] |
| Rated peak withstand current | 40 kA (50 kA) [62,5 kA] | 40 kA (50 kA) [62,5 kA] | 40 kA [62,5 kA] | 40 kA (50 kA) | 40 kA (50 kA) [62,5 kA] | 40 kA (40 kA) [40 kA] | 40 kA (40 kA) [40 kA] |
| Type of breaking device | - | NPAB1 | NPAK1 | NPAK4 | NPAK5 | - | NPAB4 |
| Rated breaking current / number of cycles | - | 25A / 100CO | 50 A / 30 CO | 250 A / 100 CO | 400 A / 100 CO 630 A / 10 CO | - | 16 A / 100 CO |
| Mechanical endurance | 2000 CO | 2000 CO | 2000 CO | 2000 CO | 2000 CO | 2000 CO | 2000 CO |

Modularity – wide range of optional equipment could be added to the base disconnector.



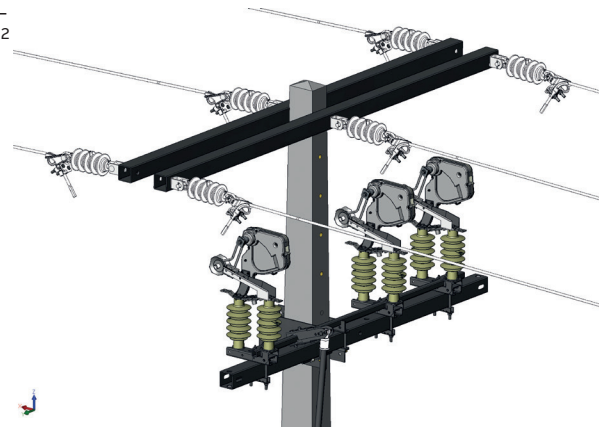
—
01 One pole horizontal
installation (wooden pole)

—
01



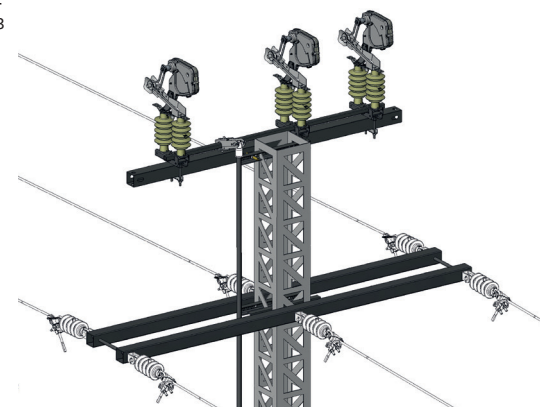
—
02 One pole horizontal
installation (concrete
rectangular pole)

—
02



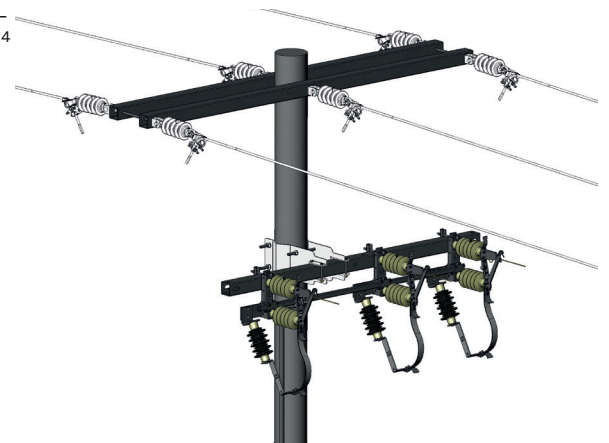
—
03 One pole horizontal
installation steel
pole structure

—
03



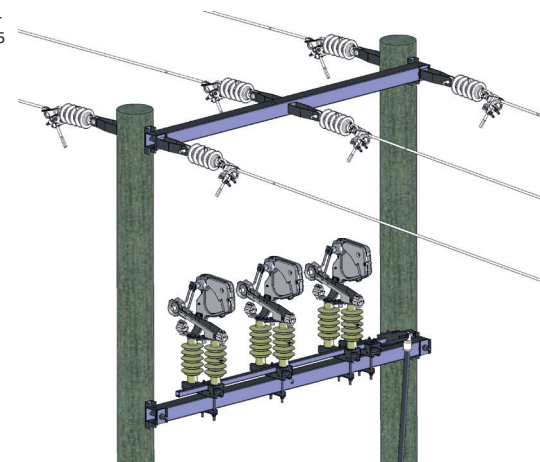
—
04 One pole vertical
installation (concrete
circular pole)

—
04



—
05 Two pole horizontal
installation (wooden pole)

—
05



—
06 UEMC50 motor
drive for NPS

—
06



ABB Contact Center

Phone: +48 22 22 37 777

e-mail: kontakt@pl.abb.com

ABB Sp. z o.o.

Branch in Przasnysz

59 Leszno St.

06-300 Przasnysz, Poland

Phone: +48 22 223 89 00

Fax: +48 22 223 89 53

abb.pl

We reserve the right to make technical changes or modify the contents of this document without prior notice. With regard to purchase orders, the agreed particulars shall prevail. ABB AG does not accept any responsibility whatsoever for potential errors or possible lack of information in this document.

We reserve all rights in this document and in the subject matter and illustrations contained therein. Any reproduction, disclosure to third parties or utilization of its contents – in whole or in parts – is forbidden without prior written consent of ABB AG. Copyright© 2017 ABB
All rights reserved